

ELECTRIC STACKER

Capacity : 1500 kg
@ 600 mm LOAD CENTRE

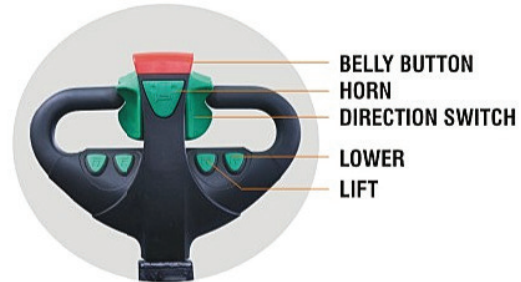
AC VERSION

Features

- ✓ Compact design for negotiating narrow aisles
- ✓ Sleek but strong mast for better visibility and stability
- ✓ Regenerative braking for power saving
- ✓ Sideways battery change
- ✓ Electronic braking and speed control
- ✓ Multiple speed mode
- ✓ Intelligent speed reduction with respect to mast position and platform
- ✓ Intelligent microprocessor based MOSFET controller of Curtis make
- ✓ Five point wheel configuration with spring suspension for positive traction, grip stability
- ✓ Heavy duty sealed limit switch
- ✓ Steel coil protected hydraulic hoses and pipe fittings

Safety features

- ✓ Anti Roll back on gradient
- ✓ Side stabilizer
- ✓ Safety interlock for lifting after FFH
- ✓ Sturdy platform
- ✓ Manually controlled proportional valve for safe lowering and lifting operation

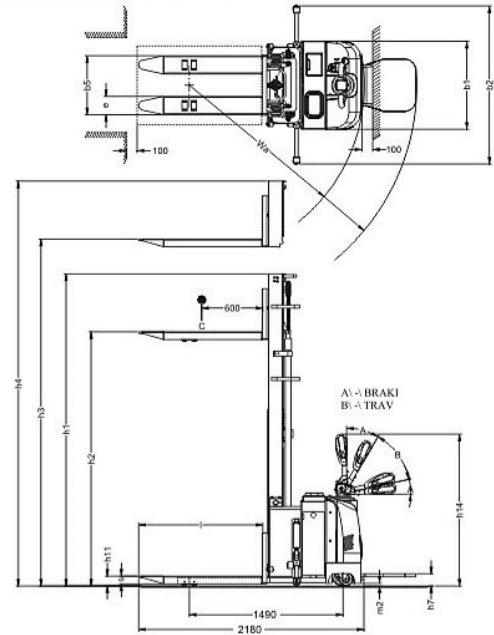


We keep the world moving

TECHNICAL SPECIFICATION

CHARACTERISTICS	1.1	Manufacturer	VOLTAS
	1.2	Model Designation	VL ST (VVE) 15
	1.3	Power unit: battery,diesel	BATTERY
	1.4	Operation:manual,stand-on,seated	STANDING
	1.5	Load Capacity	Q (kg) 1500
	1.6	Load center	C (mm) 600
	1.7	Back of fork to Load wheel center	X (mm) 709
	1.8	Wheelbase	y (mm) 1490
WEIGHT	2.1	Service weight inclu. battery (HVT 6.5m mast)	1600
WHEELS & TYRES	3.1	Tyre:solid,pneumatic,polyurethane	POLYURETHENE
	3.2	Tyre size,front (Load Wheel)	mm Ø82 x 75
	3.3	Tyre size,rear (Castor Wheel)(Drive wheel)	mm (Ø135 x 60) / (Ø230x75)
	3.4	Tyre size, side wheel - stabilizer	mm (Ø70 x 25)
	3.5	Wheels, number front & rear & side (x=drive)	mm 4 & 2 & 2 / 1x
	3.6	Track width,front - 570/ 685 wof	b10 mm 394 / 509
	3.7	Track width,rear 850 wide chassis	b11 mm 658
DIMENSIONS	4.1	Mast height,lowered	h1 mm Ref. Sheet 3 of 4
	4.2	Freelift	h2 mm *Ref. Sheet 3 of 4
	4.3	Lift	h3 mm Ref. Sheet 3 of 4
	4.4	Mast height,extended	h4 mm Ref. Sheet 3 of 4
	4.5	Overall length platform open/close	l1 mm 2680 / 2180
	4.6	Width of across fork	b5 mm 570 / 685
	4.7	Length to fork face platform closed/ open	l2 mm 990 / 1480
	4.8	Overall width	b1mm 850
	4.9	Overall width - side stabilizer open/ closed	b2 mm *1530 850
	4.10	Fork dimension	s/e/l mm 75x176x1200
	4.11	Width of fork carriage 570 / 685	b3 mm 582 / 697
	4.12	Platform height	h7 mm 150
	4.13	Platform length	l4mm 500
	4.14	Height of fork lowered	h11 mm 85
4.15	Tiller handle height	h14 mm 1470	
4.16	Tiller handle height min.	h12 mm 1100	
4.17	Tiller handle height max.	h13 mm 1360	
4.18	Ground clearance,at frame	m2 mm 30	
4.19	Aisl width pallet 1000x1200 across fork platform C/O	Ast mm 2550 / 3020	
4.20	Aisl width pallet 800x1200 across fork platform C/O	Ast mm 2510 / 2990	
4.21	Turning radius (platform closed/open)	Wa mm 1750 / 2250	
PERFORMANCE	5.1	Travel speed,with/without load AC	km/hr 6 / 6
	5.2	Lifting speed,with/without load	m/s 0.11 / 0.16
	5.3	Lowering speed,with/without load for HVT	m/s 0.25 / 0.11
	5.4	Lowering speed,with/without load for HVM	m/s 0.17 / 0.13
	5.5	Gradability with/without load	% 8 / 10
	5.6	Service brake	ELECTROMAGNETIC
	5.7	Steering	MECHANICAL
DRIVE	6.1	Motor type	AC
	6.2	Motor performance AC	Kw 1.5, S2 60 minutes rating
	6.3	Lift Motor rating	Kw 3 KW,S3 11% rating
	6.4	Battery Voltage/ rated capacity	v/Ah 24/345
	6.5	Battery weight	KG. 300
	6.6	Transmission make/model	PROPRIETARY
	6.7	Transmission Type	REDUCTION G/B
	6.8	Transmission Ratio	1:32
OTHERS	7.1	Hydraulic pump type	Gear pump
	7.2	Hydraulic pump displacement	cc/rev 3.20
	7.3	Control valve type	DIRECTION CONTROL
	7.4	Control valve flow	lpm 45
	7.5	Working pressure for attachment	bar 160
	7.6	Noise level at operators ear to EN 12053	dB(A) <75

ELECTRIC STACKER-AC



NOTE 1 : GENERAL TOLERANCE $\pm 0.12\%$
 NOTE 2 : ELECTRICAL STACKER VL ST CONFIRMING TO IS:7631
 NOTE 3 : ALL DIMENSIONS & SPECIFICATIONS ARE SUBJECT TO AVARIATION OF $\pm 12\%$ VOLTAS PRODUCTS AND SPECIFICATIONS ARE SUBJECT TO IMPROVEMENTS & CHANGE WITHOUT NOTICE

Lift Height H3	Closed Mast Height H1	Extended Mast Height H4	Free Lift H2	Capacity AT 600 mm L.C - Kg.(Q)
6500	2800	6930	2300	500
6100	2715	6665	2080	600
5400	2450	5870	1920	750
4500	2150	4970	1640	1000
3650	2425	4200	MA	1150
3150	2180	3700	NA	1300
2750	1990	3300	NA	1500

Due to continuous improvements the dimensions are subjected to change without notice

* Note : Sr.no.4.2 (h2) Free lift height & Sr. no.4.9 (b2) Side Stabilizer is not applicable for HVM Stacker.

VOLTAS

KION India Private Ltd.

Plant : 5/4 Chandan Nagar, Pune-Nagar Road, Pune - 411014, Maharashtra, India
 Enquiries : in.enquiries@kiongroup.com Contact : 020 - 67342 - 154 / 130 / 101



F.MKT.KION 302.140.00

BRANCHES

• Ahmedabad 9925013566 • Bangalore 9886156886 / 7030401312 • Bhubaneswar 9090963883 • Chandigarh 9878677873 • Chennai 8680067711 / 8680067712
 • Cochin 9747357888 • Coimbatore 9810602184 • Delhi 7840010261 / 262 / 264 • Hyderabad 9010150999 / 9951084477 • Indore 7770862223 • Jaipur 8440077044
 • Jamshedpur 9031098801 • Kolkata 9088026730 / 9088013533 • Lucknow 9839509861 • Madurai 9840234189 / 8680067712 • Mumbai 7722035028
 • Nagpur 7774027836 • Pune 7774027840 • Rudrapur 9760017871 • Surat 7624005557 • Vizag 9951066618

DEALERS

• Ahmedabad 8347009990 • Alwar 7727950505 • Ankleshwar 9327406915 • Aurangabad 9657722566 • Bangalore 9880009008, 9880009016 • Baroda 8347018700
 • Bhiwara 9414189976 • Bhiwadi 7073474882 • Bhopal 9893001962 • Bhubaneswar 9238310721 • Chandigarh 9814109048 • Chandrapur 9552470007
 • Chennai 9940052996 • Chittoor 9488119248 • Cochin 8129400987, 9995439511 • Coimbatore 9842215131 • Delhi 01141607788 / 9873937447
 • Delhi- Sarita Vihar 09810037639 • Dhanbad 9334386003 • Durgapur 8768574513 • Erode 9942215181 • Faridabad 9711206090, 9873937447
 • Gandhidham 8347009996 • Goa 9422845957 • Gurgaon 9821497550 • Guwahati 8723036408, 9435514960 • Haldia 9830340669 • Hubli 7022282690, 9845150389
 • Hyderabad 9032047822 • Indore 9826052942 • Itanagar 9435823342 • Jabalpur 8109970280 • Jaipur 7728885046 • Jajpur 9238310721 • Jamshedpur 9334825981
 • Jharsuguda 9238310721 • Jodhpur 8696911987 • Jorhat 9435823342 • Kannur 8129400987 • Kanpur 7704006170 • Karur 9842555633 • Kharagpur 9830340669
 • Kolhapur 9922996273 • Kolkata 9830194044, 9830058054 • Kota 9414189976 • Lucknow 9415005471 • Ludhiana 9855996366 • Madurai 9894671234
 • Mangalore 9902030123 • Morbi 8347000642 • Mumbai- Central 7506504034 • Mumbai- Navi 7506504034 • Mumbai- West 9820452434 • Nagercoil 9750955044
 • Nagpur 9552470007 • Nashik 9820288147 • Nellore 9542437555 • Patna 7762882580 • Pondicherry 9737735921 • Port Blair 9432359599 • Pune 9922996269
 • Pune- Chakan 9922996271 • Raipur 9552470007 • Rajkot 8128665674 • Ranipet 9787735922 • Salem 9600915181 • Siliguri 8420122021
 • Singrauli 9424643091 / 8085540843 • Sonipat 8527435559 • Surat 9099945929 • Thiruvananthapuram 8129400987 • Tinsukia 9435954861 • Tirunelveli 9750955033
 • Trichy 9750955022 • Udaipur 8696911987 • Vapi 9099945929 • Varanasi 7704002992 • Vijayawada 9542437555 • Vishakhapatnam 9885011142